

Pacheco Transit Center
Regional Express Bus Hub ^{and}
Park and Ride

Project Description and Background
TRANSPAC TAC Meeting
September 24, 2009

The County Connection



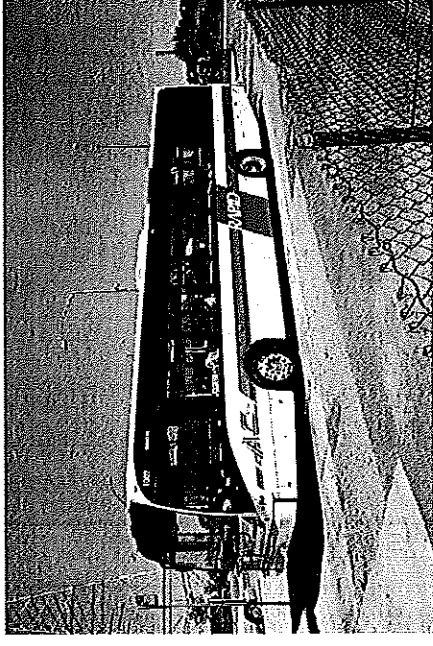
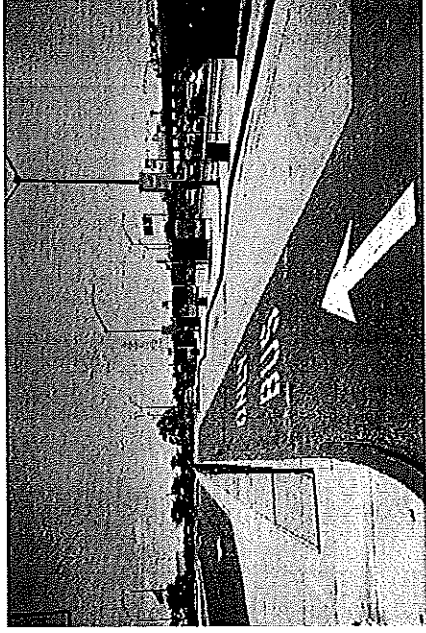
Introduction

- Who we are...
 - *Contra Costa County Transit Authority*
Cindy Dahlgren, Director of Administration
(project sponsor)

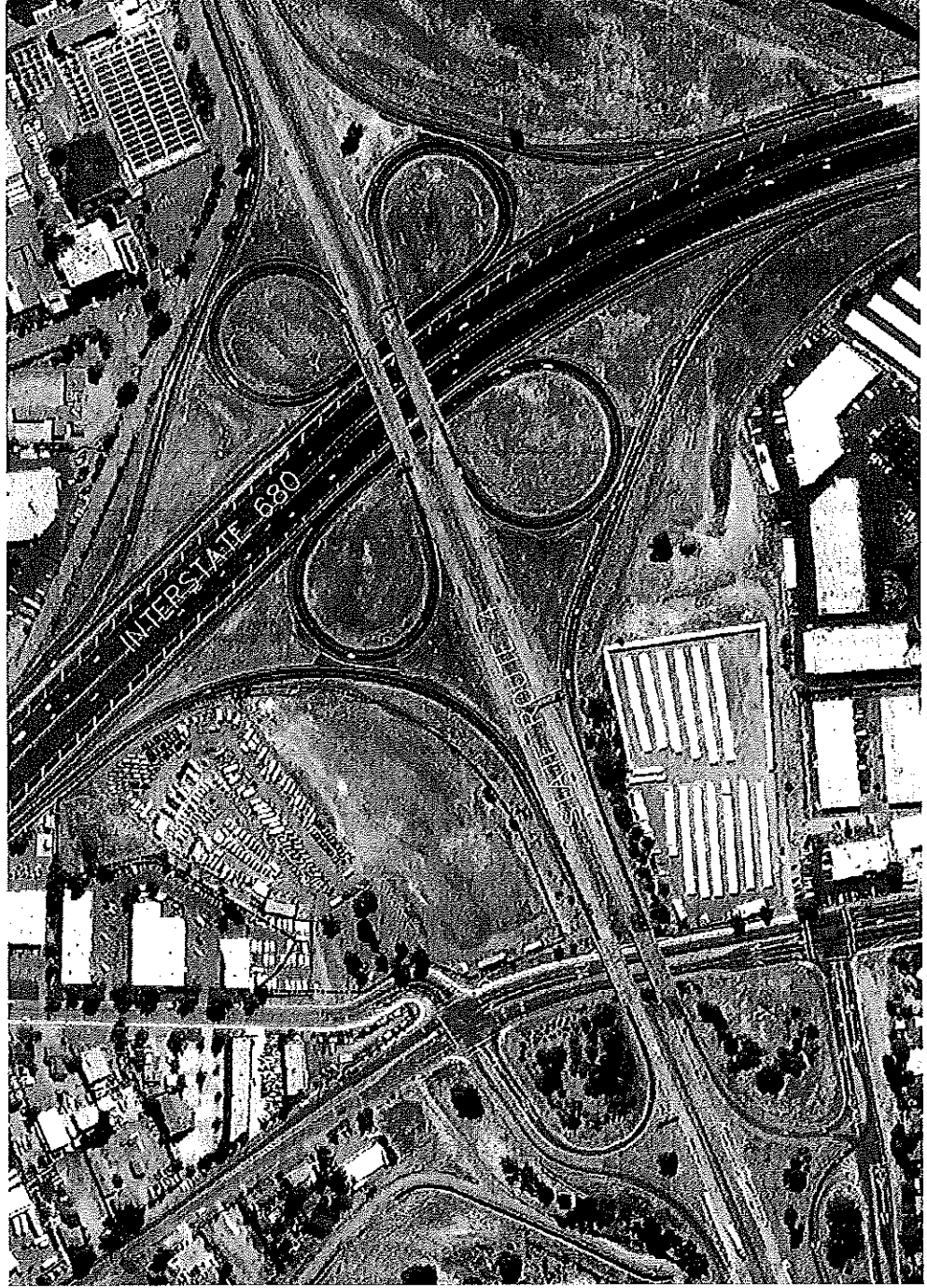


Background

- 2000 Express CCTA Bus Study
- Lack of Park-and-Ride/Bus Hub facilities along freeway corridors
- Initial Site and Outcome
- Current Site



Aerial View of Site



Initial Partners

- Contra Costa County Transit Authority (CCCTA) – Lead/Project Sponsor
- California Department of Transportation (Caltrans)
- Contra Costa Transportation Authority
- TRANSPAC (Transportation Partnership and Cooperation)
- Contra Costa County
- WestCAT
- Tri Delta Transit
- Solano Operators – Benicia, Fairfield



Construction Funding

- TFCA – Planning funds
- RM-2 – Construction funds
- Measure C Commuter Way
- Prop 1 B Transportation Bond Funds



Project Goals

- Provide improved bus access and timed transfer opportunities for express bus service in the SR4/I-680 corridor
- **Support multiple bus operators**
- Support improved express bus service
- **Increase capacity for Park-and-Ride**
- Upgrade visibility, landscaping, access and user amenities
- Provide safe, attractive, visible alternatives for commuters in the SR24/I-680 Corridor

Progress and Issues to Date

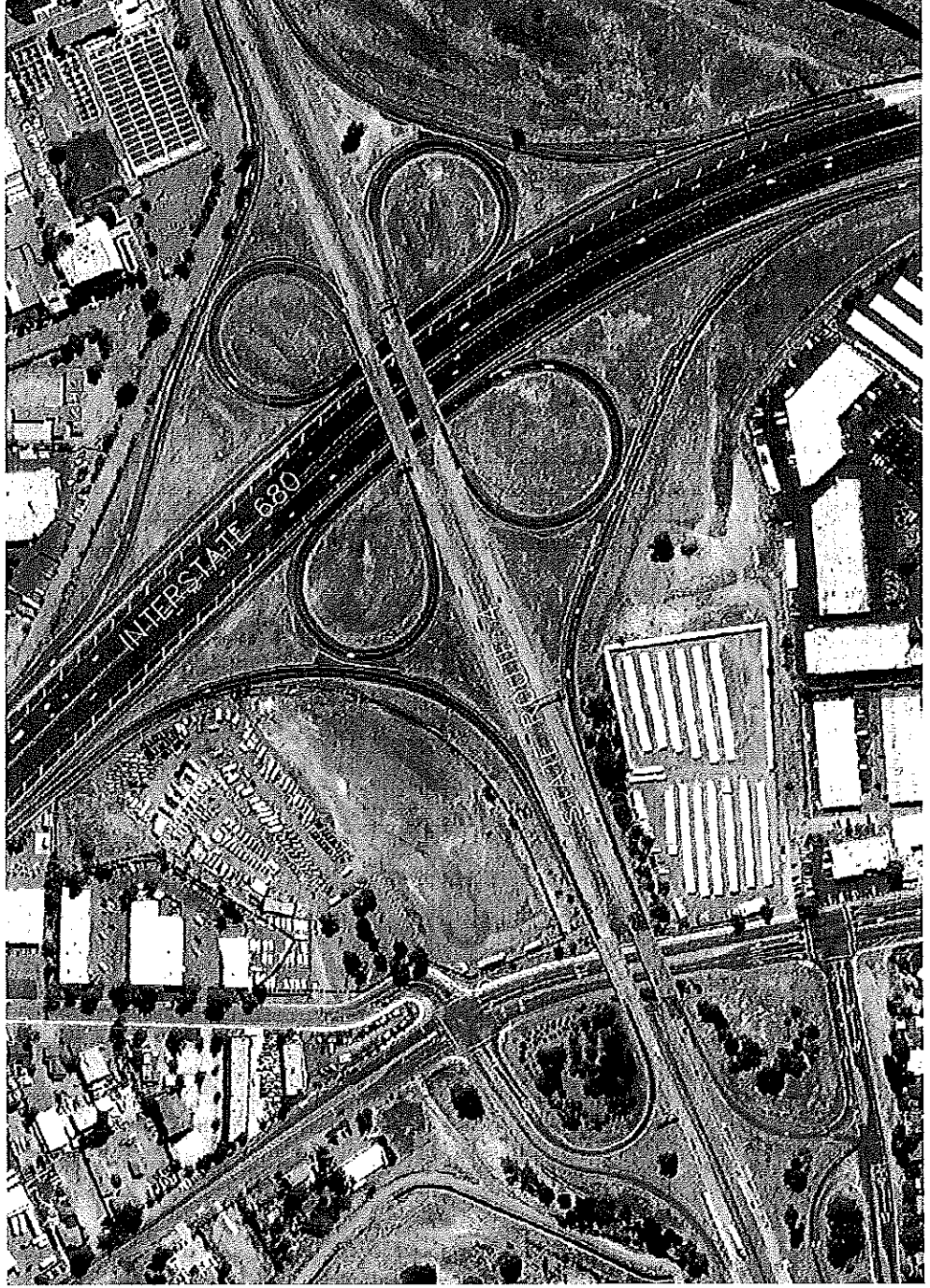
- Approved PSR/PR Signed by Caltrans
- All Construction Funds secured
- Future interchange improvement implications addressed
- Tenant Issue Resolved
- Plans and Specifications 100% Complete
- Co Op with Caltrans signed by CCCTA

Description of Design

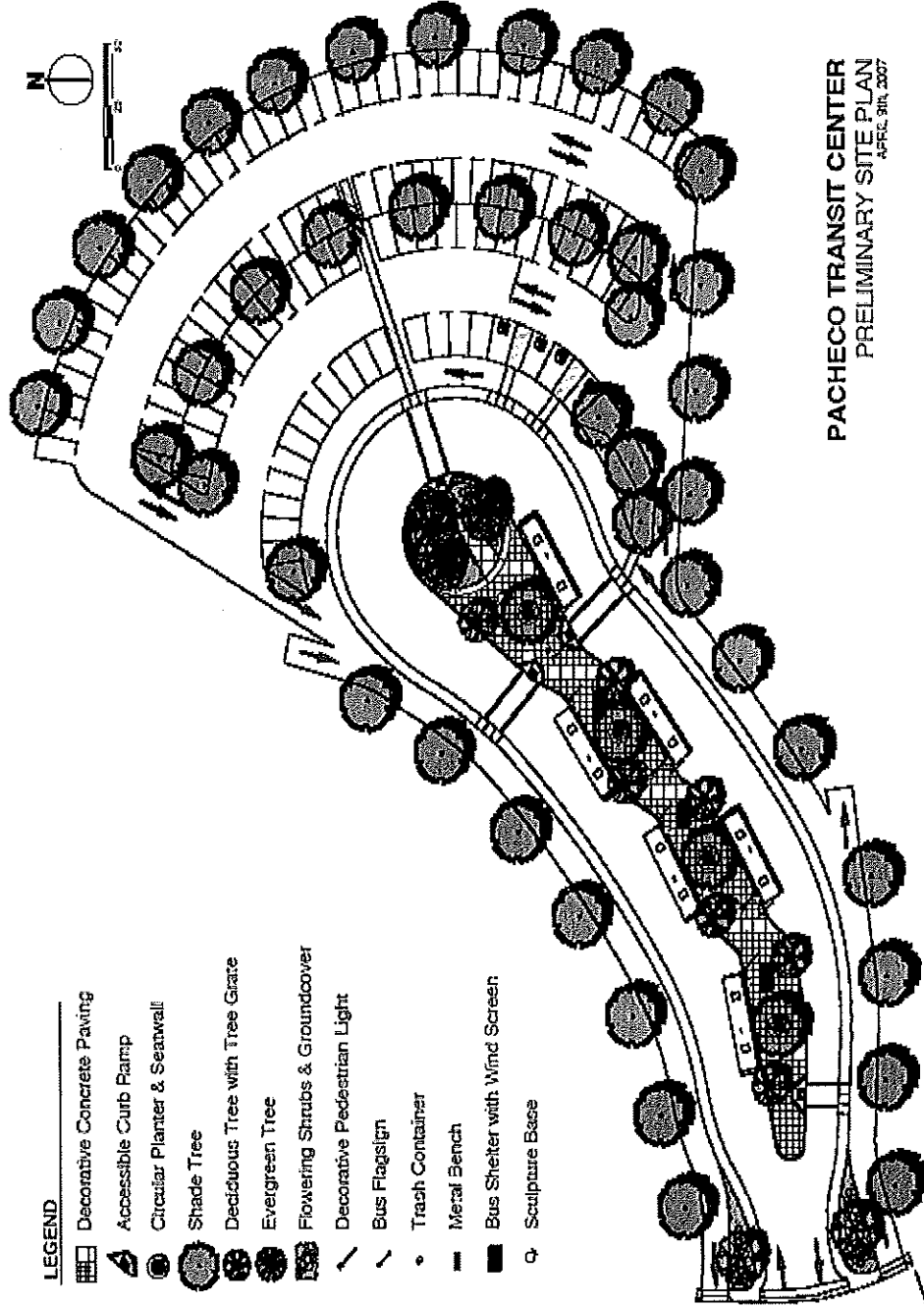
- Park-and-Ride space increase from 46 to 116 stalls, plus a “kiss and ride” drop-off zone
- Six bus bays to accommodate 40-foot buses
- Separate bus and vehicle circulation
- Tenant access
- ADA accessibility
- Lighting and Landscaping
- Transit hub amenities and furnishings

(Bike Racks, Shelters, Information Displays, Signage, Seating)

Aerial View of Site



Proposed Layout

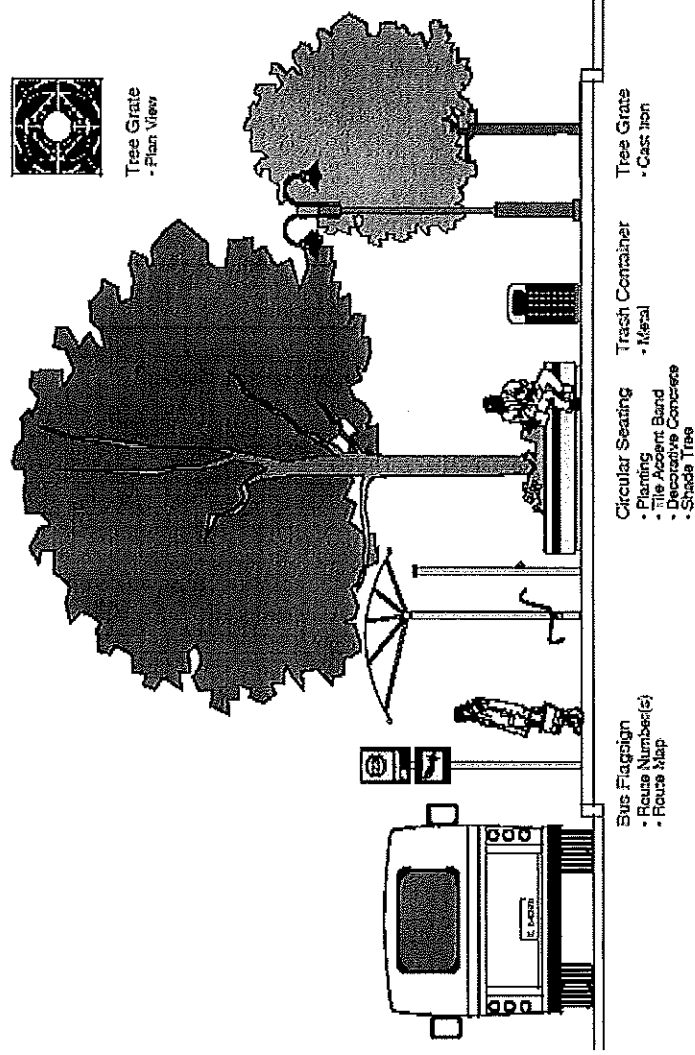


LEGEND

- Decorative Concrete Paving
- Accessible Curb Ramp
- Circular Planter & Seawall
- Shade Tree
- Deciduous Tree with Tree Grate
- Evergreen Tree
- Flowering Shrubs & Groundcover
- Decorative Pedestrian Light
- Bus Flagsign
- Trash Container
- Metal Bench
- Bus Shelter with Wind Screen
- Sculpture Base

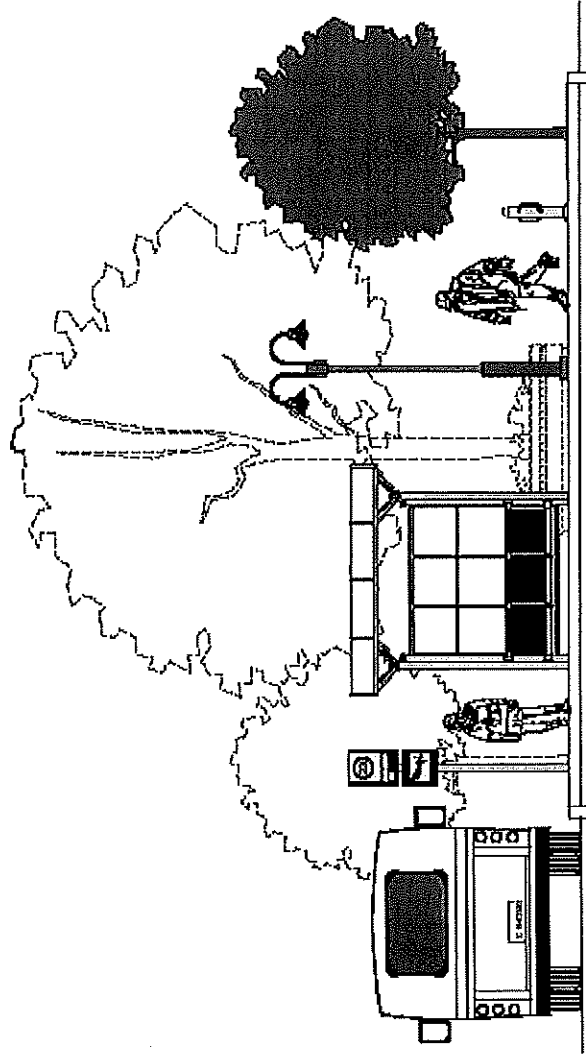
PACHECO TRANSIT CENTER
PRELIMINARY SITE PLAN
APRIL 30, 2007

Proposed Elevation - 1



PACHECO TRANSIT CENTER
SITE AMENITIES 1 of 2
APRIL 9th, 2007

Proposed Elevation - 2



- Bus Shelter & WindScreen
 - 3 Seat Bench with Backs
 - Shelter with Solar Lighting
 - Windscreen with Glass Panels
- Pedestrian Light
 - Pole Top Luminaire
 - Metal Halide Lamp
- Bike Racks
 - Stainless Steel

PACHECO TRANSIT CENTER
SITE AMENITIES 2 of 2
APRIL 9th, 2007

The Challenge

- **Funding to Maintain the facility has not been identified and secured. Facility cannot proceed without this. CCCTA has executed a Co Op Agreement with Caltrans**
- **CCCTA is project sponsor, but facility will serve all of Central County, as well as offer opportunities for transit operators from East County, West County and even Solano County. The Park & Ride portion will benefit primarily Central County Residents.**
- **Assumption of Ability to Use Measure J Express Bus Funds hindered by current economic conditions -- all these funds going to support existing express bus service.**
- **Annual Maintenance Costs: \$30,000**
 - **Water for Irrigation & Landscaping**
 - **Electricity**
 - **Trash Removal and Sweeping**
 - **Graffiti Removal**
 - **Landscape Maintenance**

Possible Solution

As the project Sponsor, CCCTA is requesting an allocation of \$30,000 per year for 10 years from the TRANSPAC Measure J *Subregional Transportation Needs* apportionment for the maintenance of the Pacheco Transit Hub.

- Small amount of money for big impact
- CCCTA actively pursuing other sources of funding -- **CMAQ, TFCA 60% funds**
- CCCTA does not want to impact any currently-funded transit or TDM projects.

Questions & Answers

