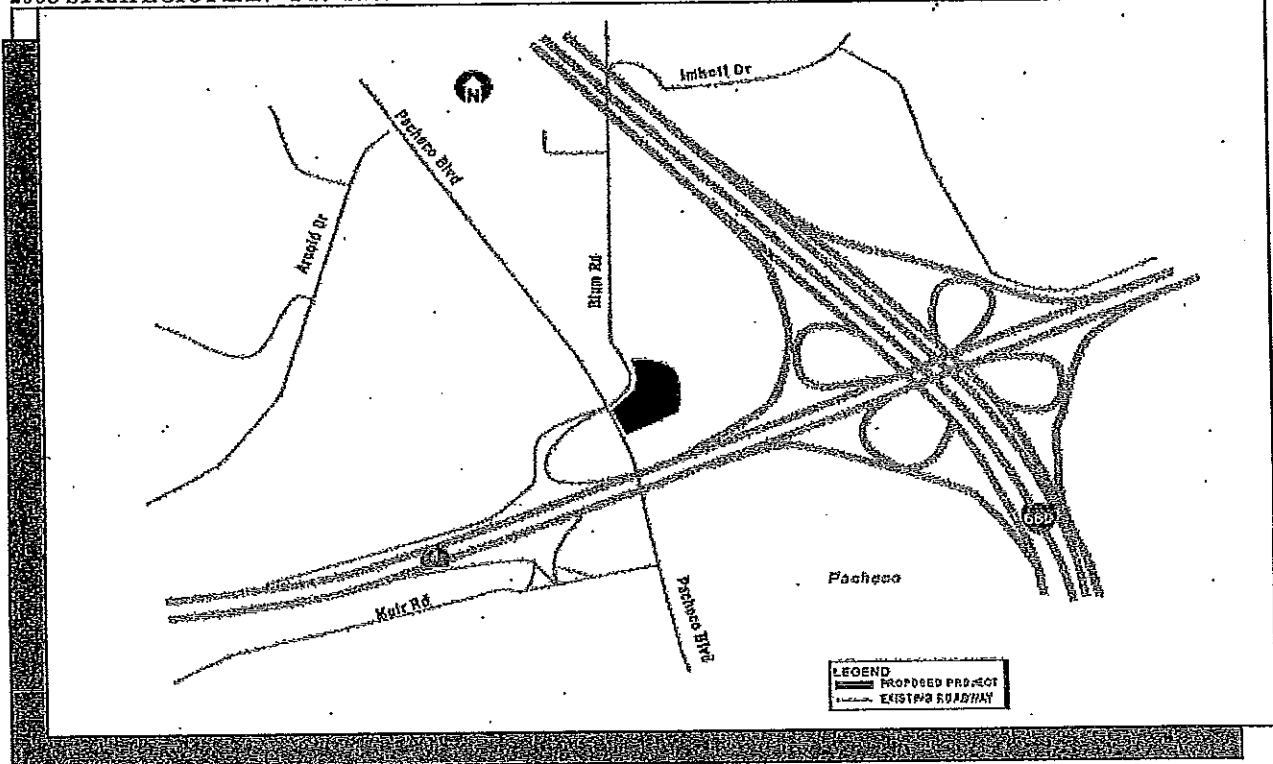


**AGENDA ITEM 5**





**PACHECO TRANSIT HUB/  
PARK & RIDE LOT**

**PROPONENT:  
CENTRAL CONTRA COSTA  
TRANSIT AUTHORITY (CCCTA)**

**PROJECT NO:  
2210**

**DESCRIPTION:**

Construct a transit hub at Pacheco Boulevard and Blum Road. The project will expand the existing park & ride lot to provide 110 parking spaces and six bus bays. The transit hub will be served by County Connection, WestCAT and Triid-Delta buses. The bus operators are financial partners in the project. The project will double the number of parking spaces available for bus patrons and carpoolers at the current park & ride lot. Project is consistent with the Contra Costa Express Bus Study that was completed in December 2001.

**STATUS:**

Environmental clearance and preliminary design started in May 2006. Construction is expected to start in 2009.

**FUNDING SOURCES (\$ X 1000):**

State (TFCFA)	93.0
Regional (RM2)	1,082.0
Measure C (Esc.\$) <sup>1</sup>	886.0
Proposition 1B	<u>800.0</u>

**TOTAL** **\$ 2,861.0**

<sup>1</sup> Measure C funds shown in escalated dollars. Actual commitment is in 1988 dollars as shown in Appendix A.

THIS PAGE INTENTIONALLY BLANK

# TRANSPLAN COMMITTEE

## EAST COUNTY TRANSPORTATION PLANNING

Antioch • Brentwood • Oakley • Pittsburg • Contra Costa County  
651 Pine Street -- North Wing 4<sup>TH</sup> Floor, Martinez, CA 94553-0095

---

September 16, 2009

Mr. Robert McCleary, Executive Director  
Contra Costa Transportation Authority  
3478 Buskirk Avenue, Suite 100  
Pleasant Hill, CA 94523

Dear Mr. McCleary:

This correspondence reports on the actions and discussions at the TRANSPLAN Committee during their meeting on September 10, 2009.

**Tri Delta Request for Sub-Regional Transportation Program Needs Funding Allocation for the Pacheco Transit Center/Regional Express Bus Hub and Park and Ride Project:** The Committee received a report on the subject project and concurred with the recommendation from the Technical Advisory Committee to approve the funding allocation with the conditions<sup>1</sup> described in the staff report.

**Strategic Plan Update:** The Committee received a report on the status of the subject process in addition to the eBART project and voted unanimously to approve Option 3 proposed by CCTA. TRANSPLAN concurred with Authority recommendations to:

1. Shift \$50M from East County Corridor category in Measure J to backfill ECCRFFA commitment to SR4 East widening.
2. Shift all Measure J funds from east county share of the following capital projects categories to eBART:
  - BART Parking, Access and Other Improvements
  - Major Streets: Traffic Flow, Safety, & Capacity Improvements
3. Shift remaining uncommitted<sup>2</sup> Measure J funds from east county share of the following programs to eBART:
  - Transportation for Livable Communities
  - Sub-regional Transportation Needs

---

<sup>1</sup> The TAC recommends that the TRANSPLAN approve the request so long as the following conditions are incorporated into the funding agreement:

A) No cost escalation will be included in the funding agreement. The \$5,000 will remain static for the life of Measure J.

B) TRANSPLAN funding would be provided only so long as the other partners fulfill their financial commitment (TRANSPAC \$15,000/annual, WCCTAC \$10,000/annual) for the life of Measure J.

<sup>2</sup> Committed funds include:

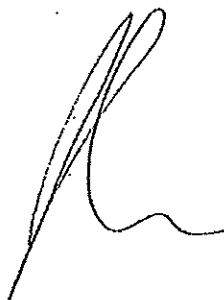
- \$200,000 to Pittsburg/Bay Point BART Station Pedestrian/Bicycle Access Plan from the TLC program
- \$5,000 per year from the Sub-regional Transportation Needs category to Tri Delta

Mr. McCleary,  
September 16, 2009  
Page Two

TRANSPLAN reiterated that should revenue projections improve in the future or if higher than anticipated savings are experienced, funding shall be restored to the programs from which they are being shifted from as a result of aforementioned approval of Option 3.

The next regularly scheduled TRANSPLAN Committee meeting will be on Thursday, October 8, 2009 at 6:30 p.m.

Sincerely,



John W. Cunningham  
TRANSPLAN staff

c: TRANSPLAN Committee  
TRANSPLAN Technical Advisory Committee  
A. Dillard, SWAT  
B. Neustadter, TRANSPAC  
C. Atienza, WCCTAC  
L Bobadilla, TVTC  
D. Rosenbohm CCTA  
E. Smith, BART  
H. Noemi, CCTA

Pacheco Transit Center  
Regional Express Bus Hub <sup>and</sup>  
Park and Ride

---

*Project Description and Background*

*TRANSPAC TAC Meeting*

*November 19, 2009*

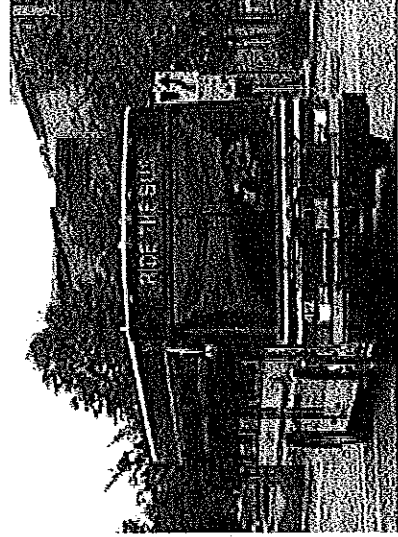
***The County Connection***

---

# Introduction

---

- Who we are...
  - *Contra Costa County Transit Authority*  
*Cindy Dahlgren, Director of Administration*  
*(project sponsor)*

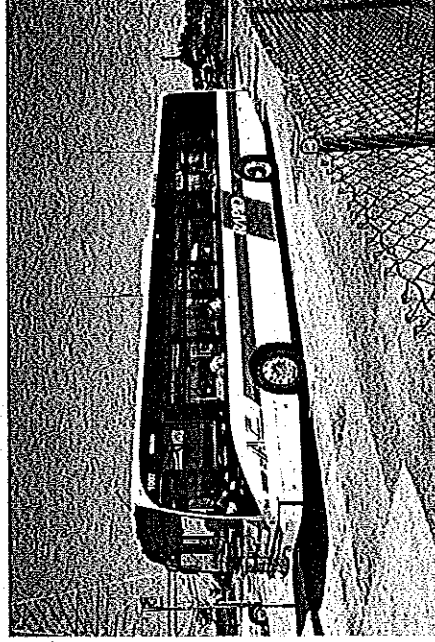
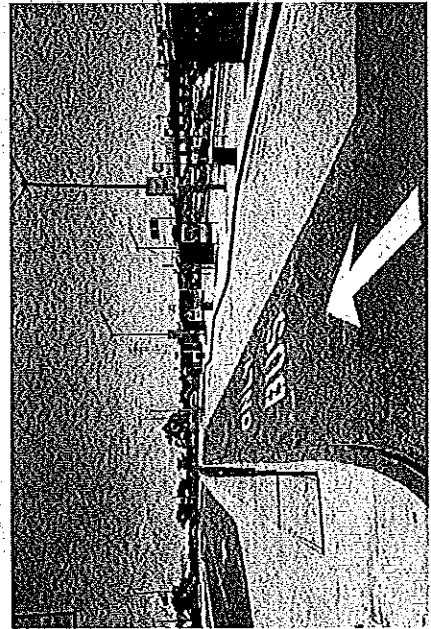




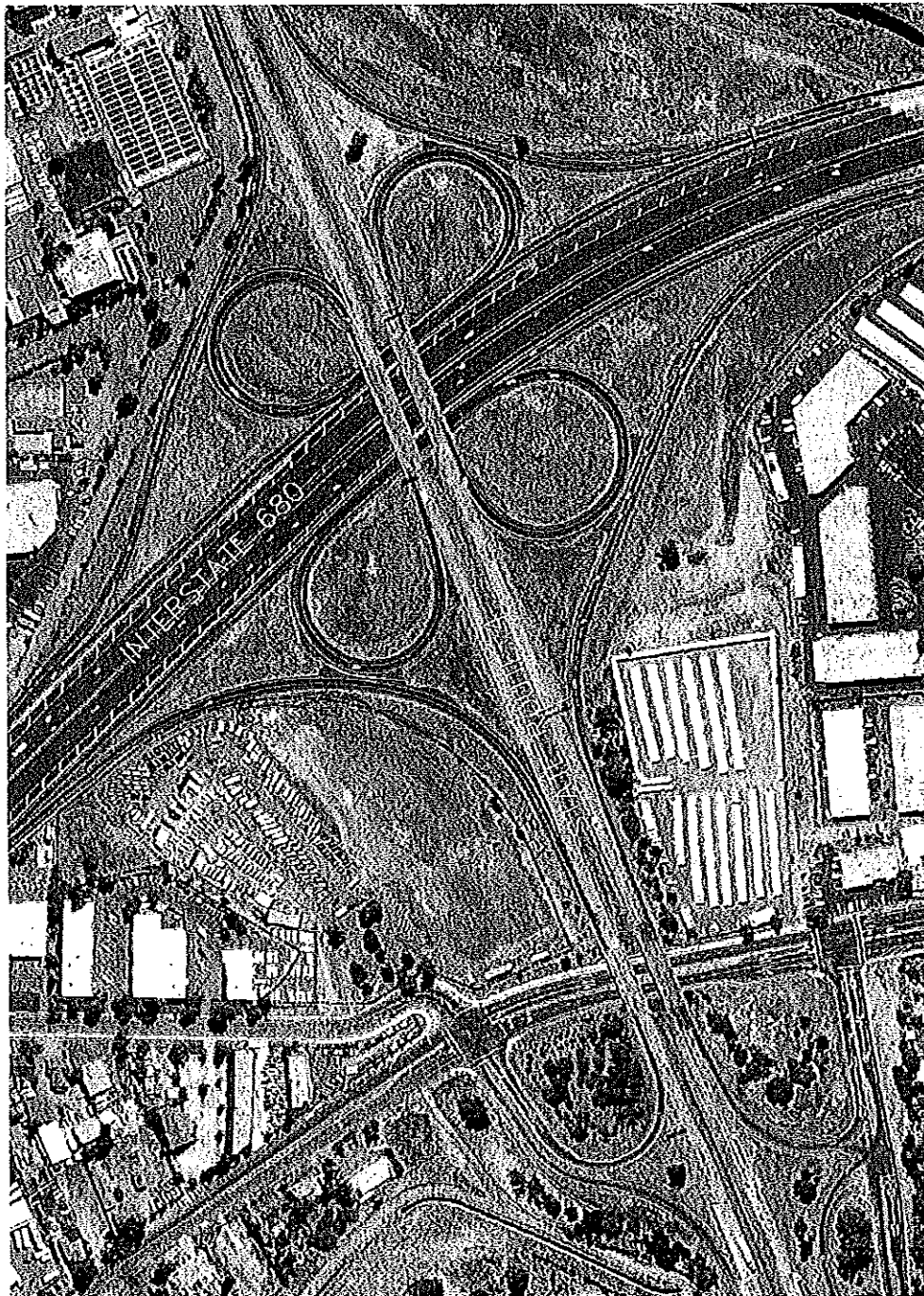
# Background

---

- 2000 Express CCTA Bus Study
- Lack of Park-and-Ride/Bus Hub facilities along freeway corridors
- Initial Site and Outcome
- Current Site



# Aerial View of Site



*The County Connection*

# Construction Funding

---

- TFCA – Planning funds
- RM-2 – Construction funds
- Measure C Commuter Way
- Prop 1 B Transportation Bond Funds



# Initial Partners

---

- Contra Costa County Transit Authority (CCCTA) – Lead/Project Sponsor
- California Department of Transportation (Caltrans)
- Contra Costa Transportation Authority
- TRANSPAC (Transportation Partnership and Cooperation)
- Contra Costa County
- WestCAT
- Tri Delta Transit
- Solano Operators – Benicia, Fairfield



# Project Goals

---

- Provide improved bus access and timed transfer opportunities for express bus service in the SR4/I-680 corridor
- **Support multiple bus operators**
- Support improved express bus service
- **Increase capacity for Park-and-Ride**
- Upgrade visibility, landscaping, access and user amenities
- Provide safe, attractive, visible alternatives for commuters in the SR24/I-680 Corridor

# Progress and Issues to Date

---

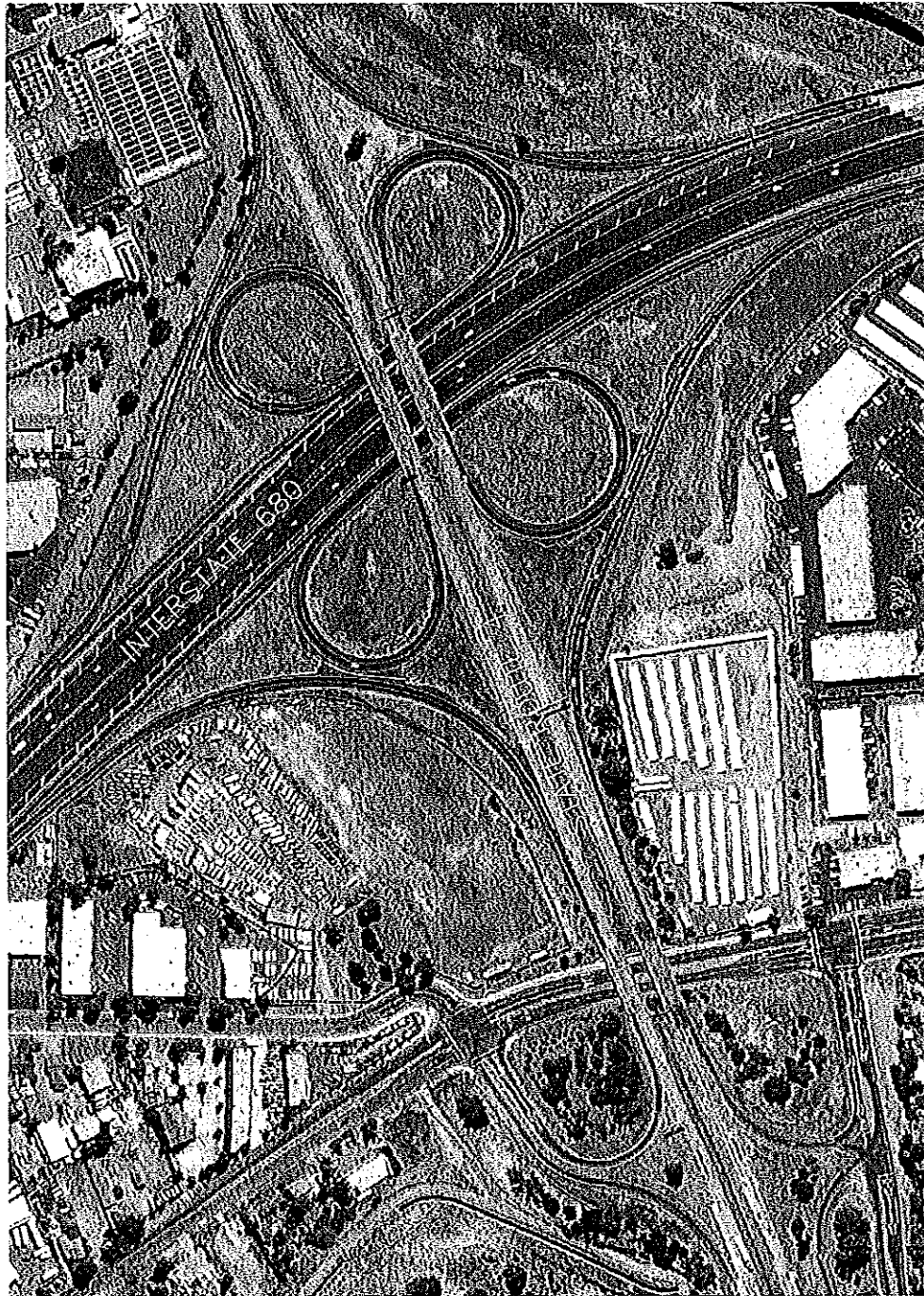
- Approved PSR/PR Signed by Caltrans
- All Construction Funds secured
- Future interchange improvement implications addressed
- Tenant Issue Resolved
- Plans and Specifications 100% Complete
- Co Op with Caltrans signed by CCCTA

# Description of Design

---

- Park-and-Ride space increase from 46 to 116 stalls, plus a “kiss and ride” drop-off zone
- Six bus bays to accommodate 40-foot buses
- Separate bus and vehicle circulation
- Tenant access
- ADA accessibility
- Lighting and Landscaping
- Transit hub amenities and furnishings (Bike Racks, Shelters, Information Displays, Signage, Seating)

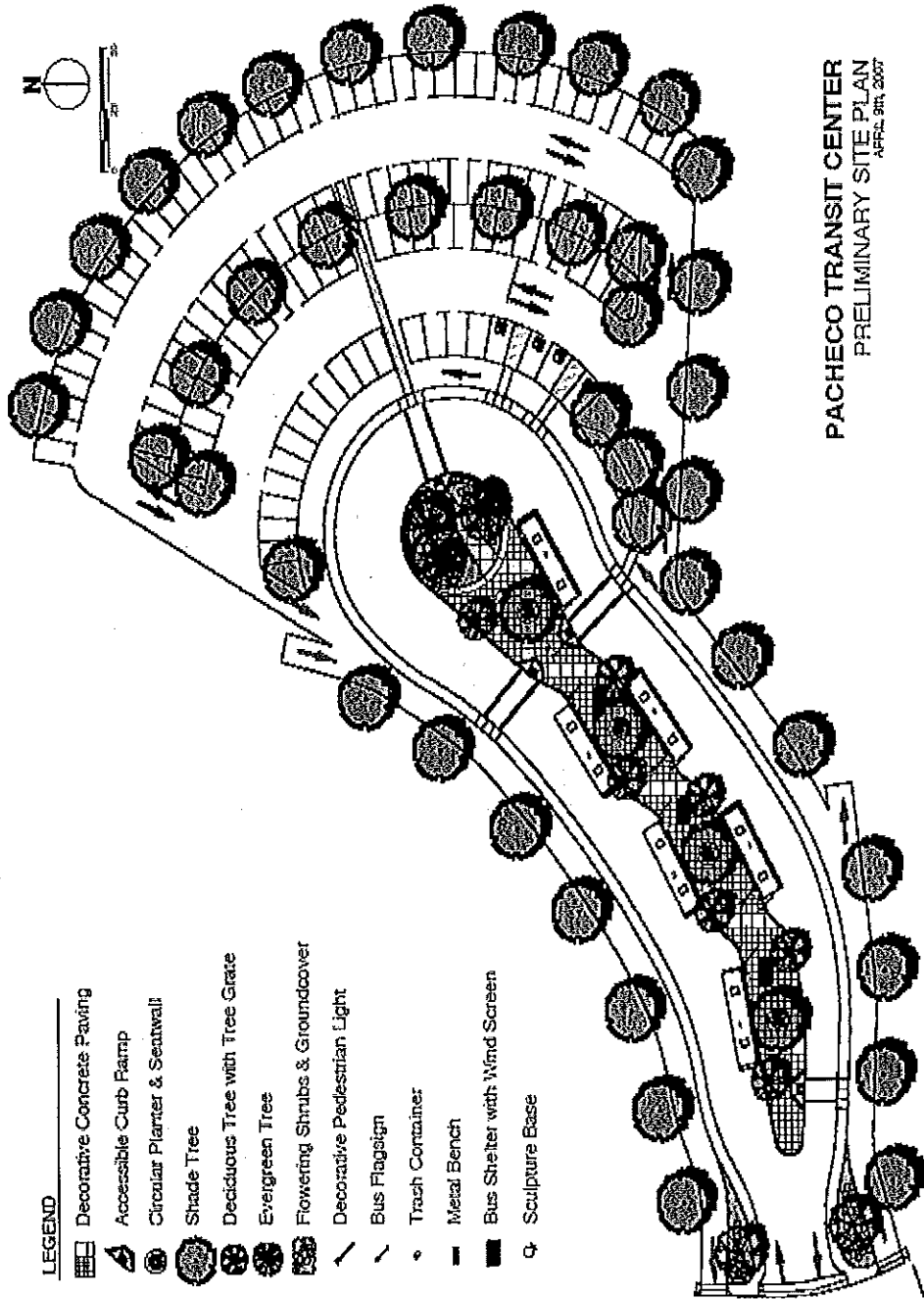
# Aerial View of Site



*The County Connection*



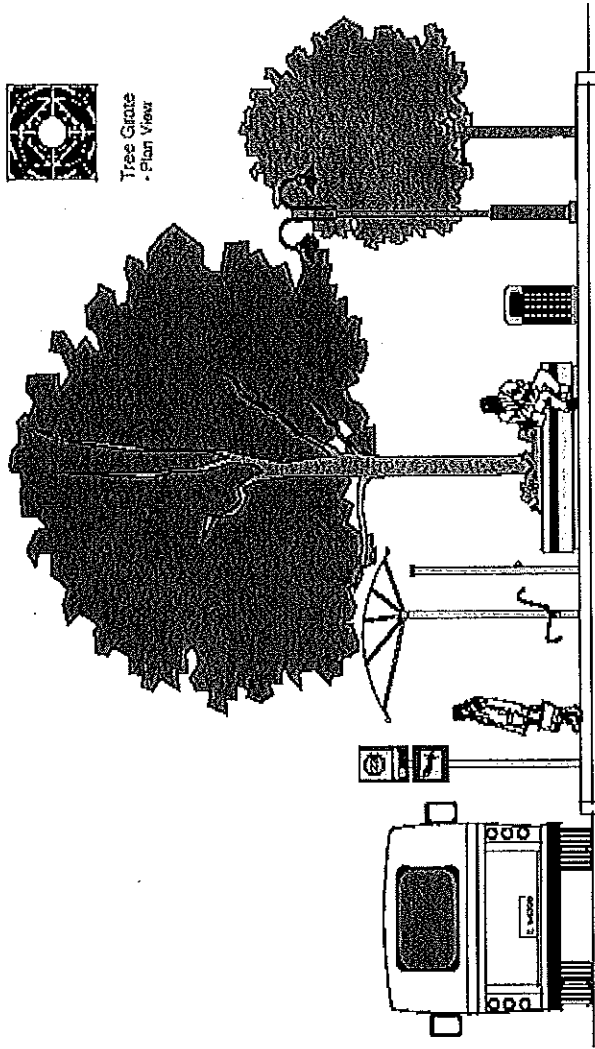
# Proposed Layout



- LEGEND**
- Decorative Concrete Paving
  - Accessible Curb Ramp
  - Circular Planter & Seawall
  - Shade Tree
  - Deciduous Tree with Tree Grate
  - Evergreen Tree
  - Flowering Shrubs & Groundcover
  - Decorative Pedestrian Light
  - Bus Flagsign
  - Trash Container
  - Metal Bench
  - Bus Shelter with Wind Screen
  - Sculpture Base

PACHECO TRANSIT CENTER  
PRELIMINARY SITE PLAN  
APRIL 30th, 2007

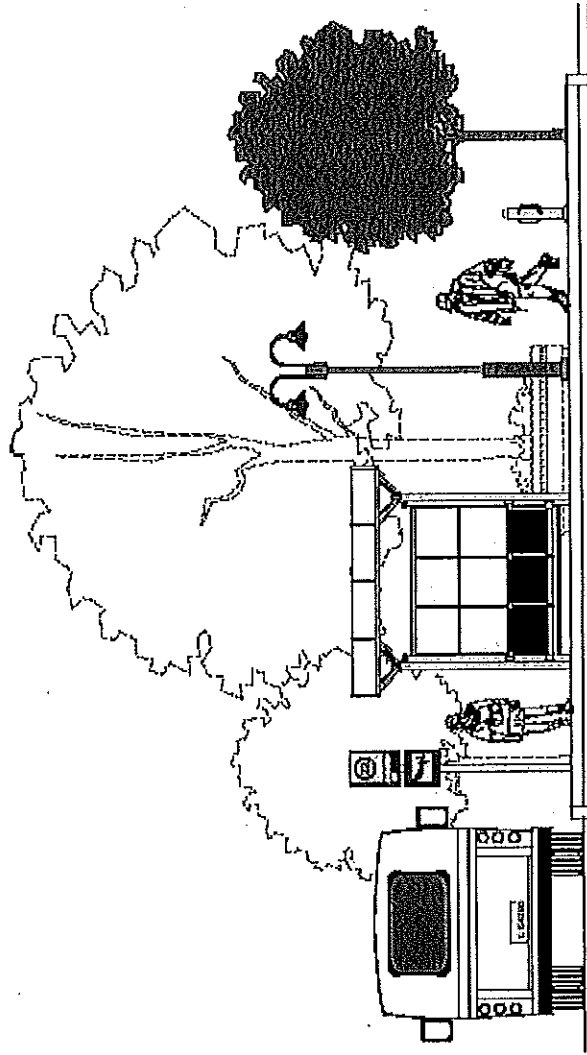
# Proposed Elevation - 1



- Bus Flagsign
  - Route Number(s)
  - Route Map
- Circular Seating
  - Planting
  - Tile Accent Band
  - Decorative Concrete
  - Shade Tree
- Trash Container
  - Metal
- Tree Grate
  - Cast Iron

PACHECO TRANSIT CENTER  
 SITE AMENITIES 1 OF 2  
 APRIL 04, 2007

# Proposed Elevation - 2



- Bus Shelter & WindScreen
  - 3 Seats Bench with Backs
  - Shelter with Solar Lighting
  - Windscreen with "Glass" Panels
- Pedestrian Light
  - Pole Top Luminaire
  - Metal Halide Lamp
- Bike Racks
  - Stainless Steel

**PACHECO TRANSIT CENTER**  
 SITE AMENITIES 2 of 2  
 APRIL 5th, 2007

# The Challenge

---

- Funding to Maintain the facility has not been identified and secured. Facility cannot proceed without this. CCCTA has executed a Co Op Agreement with Caltrans
- CCCTA is project sponsor, but facility will serve all of Central County, as well as offer opportunities for transit operators from East County, West County and even Solano County. The Park & Ride portion will benefit primarily Central County Residents.
- Assumption of Ability to Use Measure J Express Bus Funds hindered by current economic conditions -- all these funds going to support existing express bus service.
- Annual Maintenance Costs: \$30,000
  - Water for Irrigation & Landscaping
  - Electricity
  - Trash Removal and Sweeping
  - Graffiti Removal
  - Landscape Maintenance

---

# Possible Solution

**As the project Sponsor, CCCTA is requesting an allocation of \$30,000 per year for 10 years from the TRANSPAC Measure J *Subregional Transportation Needs* apportionment for the maintenance of the Pacheco Transit Hub.**

- Small amount of money for big impact
- CCCTA actively pursuing other sources of funding -- **CMAQ, TFCA 60% funds**
- CCCTA does not want to impact any currently-funded transit or TDM projects.

# Questions & Answers

---

