

**4. Approval of East Bay Regional Park District (EBRPD) reallocation request**

**Attachments:**

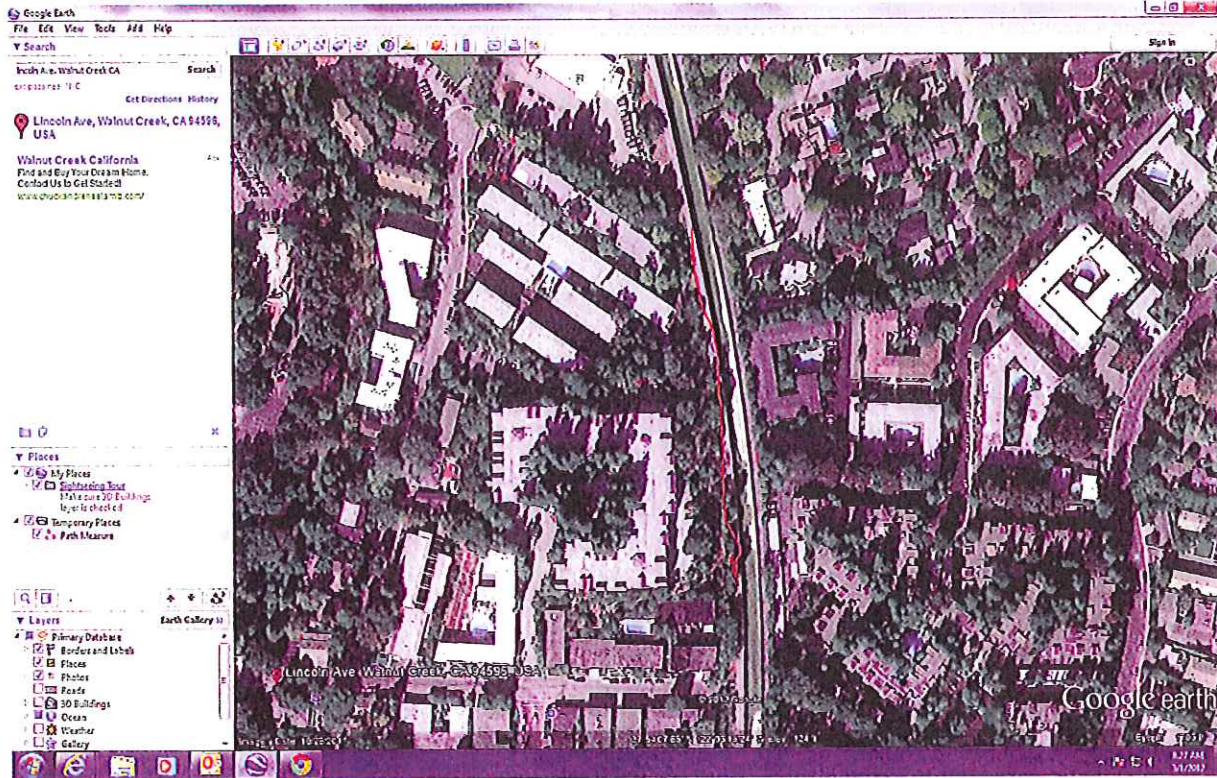
- Scope of Project, Iron Horse Trail Paving Replacement – Lincoln Avenue, Walnut Creek

(

(

(

# Iron Horse Trail Paving Replacement Lincoln Ave. Walnut Creek



## Scope of Project:

Provide all materials, labor and equipment necessary to remove and replace approximately 600 linear feet of trail on the Iron Horse Trail in Walnut Creek, adjacent to Lincoln Ave.

1. Remove approximately 8000 square ft. of asphalt (AC) and haul off AC spoils.
2. Compact subsoil and install geo-textile fabric.
3. Import Class II Aggregate Base (AB) as necessary and compact. ( 6 in. min.)
4. Install minimum three (3) inches thick of ½ in. medium hot mix asphalt.
5. Place Class II Aggregate Base (AB) at the edge of trail as a shoulder and tie into the existing grade.

800 linear feet, 10 feet wide (6,000 sq. ft.) @ \$4.00/ sq. ft.	= \$ 32,000.00
Drainage Improvements	= \$ 8,000.00
<b>Total Cost</b>	<b>\$ 40,000.00</b>

